

The Legends Golf Resort, Myrtle Beach, South Carolina!!

THE SUMMIT

13TH ANNUAL MILLENNIUM INVITATIONAL GOLF SUMMIT

MARCH 17-20, 2012

What Went Wrong?

Is Kevin In Trouble?

The answer may surprise you!

Interview with a Champion

Pg. 19

What TV Character Is Your Favorite Summiteer

Most Like?

Find out inside!



'Investing in Lifetimes.'

Colton Returns!

Is it time for a time limit?

New Blood!

The Director Speaks Out

Pg. 1

The Legends

Back to Where it all Began

Will Woody's Dominance Continue?

Meet The Phils

Are They all That?

Steve and Ben sure think so

Pg. 48

Summit Photo Gallery

Pg. 16

Missing in Action!

For the first time in Summit history, a Champion is unable to defend his Title. After weeks on his back in the wake of reconstructive knee surgery, Summit Officials have hired a crack team of specialists dedicated to getting Kevin up as soon as possible. Experienced medical professionals stand at the ready, bursting at the seams to assist him in receiving the hands-on treatment he so desperately needs and deserves.

A Word from the Director

New Blood!

Every two years, it seems, The Summit experiences some sort of minor upheaval. Whether a change in the lineup, expansion of the field, modification to the format/contests, or all of the above, with every wind of change, comes a new air of excitement. 2012 promises to be just such a year.

With the return of crusty old veteran, Chris Colton, rain/frost delays are suddenly the least of our concerns. However, never fear! Summit organizers have already made arrangements with The Legends staff for earlier tee times, thus eliminating the threat of darkness. In addition, rearrangement of groups are being mapped-out, so that the first eight can go ahead and get cleaned-up for dinner while the final group finishes. Furthermore, in a spicy new twist, we're in the process of devising a system for auctioning-off spots in the final group. The proposed format would be similar to a Swedish auction wherein unfortunate souls in the last group incrementally up the ante until someone accepts their offer to trades places with them.

2012 also welcome the addition of two 'noobs' that, from this point forward, will be referred to collectively as 'The Phils'. Interestingly enough, The Phils' similarities appear to end with their names— one is tall and rugged, the other is dwarfish and dainty; one is as athletic as a racehorse, the other is as adorably clumsy as a newborn foal; one can drink like a fish, the other thinks he can; one is surprisingly good with the ladies, the other went to Hampden-Sydney. By all accounts, the one characteristic The Phils have in common is their golfing ability. Both enter The Summit as mid-handicappers with only one shot separating them and, as is typical of rookies, absolutely no chance at winning the Title. The good news for The Phils is that very few people know them well, so everyone will be nice to them.

While we are excited by the return of Chris and welcome our new participants to The Summit, we are equally saddened to say goodbye to some old friends and valiant competitors. Kevin will become the first SMC Champion in Summit history to not defend his Title. After joining the ranks of multi-Title holders, Kevin will be forced to relinquish his Title due to declining health. Sources close to Kevin have been quoted as saying, "He has the joints of an 80-year old.", "The atrophy is appalling!", and "The worst case of whip-



By Bart Edmunds
Tournament Founder
& Director
Two-Time SMC Champion

A Word from the Director

lash I've ever seen." Misery loves company, so as he convalesces, Kevin can draw solace from famous characters throughout history that have suffered plights similar to his own— characters such as Willy Loman from *Death of a Salesman*, Oedipus, or Mary Shelley's Frankenstein's monster. We sincerely hope that Kevin is able to recover and break the chains that bind him— whatever they may be.

We'll also miss our on-again-off-again Dave Linden. This little booger has been back with us a couple of years now and has managed to worm his way back into all our hearts after the galoshes incident a few years back. Dave is like a beautiful butterfly that flutters in and out of our lives without rhyme or reason [*Editor's Note: Some have suggested 'bad pennies' and 'cold-sores', but I prefer 'beautiful butterfly'*]. Though never a threat to win much of anything, Dave is an alright guy, has been an asset to The Summit, and will be sorely missed (no pun intended).

Our final departure from the '12 Summit also happens to be our most recent new addition— Jeff Parker. Jeff initially joined us in Hilton Head three years ago as a result of Dave's first untimely exit. Jeff has brought an element to The Summit like no other. His enigmatic personality defies description. To employ a few old-school TV references, Jeff is like Mork from Ork meets Archie Bunker with a twist of Lenny and Squiggy. Jeff also happens to be Joe's last hope of erasing decade-old scoring records from that 'dark time' when Joe was 'just starting out' (Remember when you went through that, Joe?). While Jeff regrettably withdrew from this year's Summit, he was quick to get his name on the list for next— a request that gave rise to an interesting discussion.

In discussing the Summit 'policy' on participants and the waiting list, one of the wiser, founding 'Great Eight' offered-up the idea that the waiting list be arranged in whatever order was deemed to be most desirous to The Summit. He went further to suggest that not only the waiting list be discretionary, but, each year, the list of invitees consist of whomever made the most sense— in other words, nobody is guaranteed a spot. My first reaction was that it didn't seem quite fair. He pointed out that any other golf trip consists of the organizer (s) and invitees and that each is defined as such for a reason. The more I pondered this revolutionary way of thinking, the more sense it made. Why should congenial, cooperative, and even contributing individuals be forced to wait outside for someone to leave while the surly, sullen, or otherwise supercilious siphon off the pleasures of The Summit, yet add very little? Why, indeed?

A Word from the Director

The Summit has been fortunate over these past twelve years to have suffered minimally in the way of personality conflicts or strife. Like any family, there have been spats and misunderstandings, but, all-in-all, we've maintained a 'happy home'. A few of the more recent incidents that come to mind are 'The Cage Fight', 'The Black Summiteers', 'The Handicap Flap', 'The Video', 'The Presentation', 'The Drive-By', and 'The Hat'. [*Editor's Note: For those of you unfamiliar with these episodes, please see anyone associated with The Summit for more than two years.*]. In reminiscing on the aforementioned incidents, a pattern begins to emerge as it quickly becomes apparent that these notable Summit incidents contain a couple of common denominators or catalysts. Like that one cousin who thought it would be funny to throw the bride in the pool or accidentally spiked the volleyball into the nose of his eleven-year old niece at the family reunion, one begins to wonder, 'Would mayhem and discord disappear if the bad apples were taken out of the barrel?'

Just as Augusta excommunicated Gary McCord and David Feherty for 'inappropriate' comments and cut-off sponsors, Coke and IBM, to maintain autonomy, The Summit must continually examine its relationships to ensure its long-term viability and prestige. Unlike Augusta, however, the Summit is like family. So, like family, we accept Steve and Ben for who they are now; recognizing that we must all work together to shape and mold them into contributing members of the Summit society. After all, the fruits and bounty of The Summit must go to those who appreciate and contribute to its singularity while rejecting attempts to commoditize it; to those who add to its positive energy and repel those who attempt to muddy it with negativity and complaints, and to those who recognize The Summit as not just a 'golf trip', but as an Event.

To imply that The Summit is just another golf trip is like saying that Christmas is just another holiday. This can, however, become a double-edged sword. Focusing only the pleasurable aspects of The Summit, one can easily lose sight of its uniqueness; while too much focus on the maintenance of standards and traditions, makes it hard to simply relax and enjoy the camaraderie which is the heart and soul of this Event. No holiday has as much meaning and tradition as Christmas. Simultaneously, few generate anywhere near the level excitement and anticipation. This only becomes a topic for discussion when the two sides of this same coin find themselves out of balance.

Certain traditions are designed to be fun. *The Summit* magazine was

A Word from the Director

inspired by Woody Deans, who, before the days of Microsoft Publisher, would cut-and-past a four-page schedule/roster for his annual 'Resort Tour' trip in celebration of the end of another school-year. Woody's idea has grown from Summit One's slightly larger summary of the Event with its humorous jabs at various participants to Summit Ten's 100-page celebration of a decade filled with funny feats, fantastic finishes, and fabulous fellowship. 'The Book', as it's come to be known, was put together as a guide to provide participants a recap of previous events along with details on the upcoming one. There are statistics, score sheets, and schedules. For added content and humor, participants have been given writing assignments where their fellow competitors have been compared to everything from small rodents to mythological gods. Over the years, there have been a variety of dubious stories and veiled references as *The Summit* is filled with inside jokes while operating slightly outside the box— all for the enjoyment of you, the participants.

Somewhere along the way, the notion was adopted that *The Summit* was published for the pleasure and approval of the general public, or, more specifically, wives and girlfriends. It's even been whispered in darkened corners that some significant others disapprove of both *The Summit* and *The Summit*. To my complete surprise and bewilderment, I was publicly accosted and berated, at one point, by a fellow Summiteer for what he felt was offensive material (to his significant other) related to the mating rituals of hyenas. It was even suggested to me that it would "make the wives happy" if some aspects of *The Book* (ie: the cover) were changed-up. It never occurred to me that, with regard to *The Summit*, the sensibilities of significant others or 'making the wives happy' was of any more relevance than entertaining my grandmother.

Consider this . . . I don't read *Cat Fancy* magazine, because it wasn't written for me, and therefore, holds no appeal. I don't know all that much about cats, and, frankly, I don't care. Conversely, I am very discriminating as to which movies my nine-year old watches, as I recognize that some might be inappropriate and/or upset her (or her mom). I don't fault the publisher of *Cat Fancy* for my lack of interest or the producer of *The Exorcist* for scaring my child. If I don't enjoy *Cat Fancy*, I simply don't read it—but I don't criticize or judge those who do. If I let my nine-year old watch *The Exorcist*, knowing that it will terrify her, shame on me— I should know better!

If Reagan insisted on watching *The Exorcist*, and I gave in, against my

A Word from the Director

better judgment, knowing full well that she would find it upsetting, then the consequences are mine to bear. If that means dealing with recurring nightmares or an extra body in my bed for a month, that's on me. Cynthia and Aston don't like scary movies, so I don't force them to watch them. On the other hand, Morgan and I like the excitement and adrenalin rush of an occasional horror flick. Cynthia doesn't attempt to impose her fears on Morgan and me by restricting what we watch. If we choose to watch *The Exorcist*, that is our decision. A decision which has no effect on the rest of the family or anyone else, for that matter.

Guy-trips, like girl-trips, are healthy for all involved. No one loves their family more than me (except for maybe Woody). Family vacations are the highlight of my year. The difference is that, on a family vacation, I still have responsibility— for activities, money, schedules, discipline, manners, meals, lodging, transportation, problem-solving, decision-making, and general consideration to those around me. On a guy-trip, the dynamic is entirely different— a man is only responsible for himself (and his Summit assignment). When I get home, I'm more excited and appreciative of my family and my role therein than ever. My batteries are charged. If I was unable to go, for whatever reason, I'm sure I would long to join in the reindeer games and resent my restraints— that's just human nature.

Unlike 'golf trips' where golf is merely the backdrop for what is more of a 'drinking trip', The Summit always has and continues to revolve around golf. From the time we get up for our FREE breakfast to the time we go to bed, we're playing and/or talking about golf (or politics if Ken is around— he's always stirring something up). On a debauchery scale of 1-10, 1 being the 'Church Mice' and 10 being a scene from *The Hangover*, The Summit would score about a 2.5. I've had golfers scratch their head in confusion as I explain that *sometimes some guys might go out one night*, but, for the most part, everyone's in bed by 11pm, so as not to be at a disadvantage on the course the next day. In recent years, we've pushed back the Sunday tee-times specifically to allow/encourage one night of 'looser' behavior without the concern of getting up at the crack of dawn.*

Between breakfast and our complimentary, watered-down drink at Ailsa Pub, however, there is never a dull moment. Last year, the crowd stirred upon hearing that Jeff had gone 5 up on Steve who, the night before, had guaranteed a win by stating that, "If I lose to Jeff, I will take that umbrella right there and [open it where the sun don't shine.]" Bo had an unusual Tournament in '11. He soared to great heights by scoring a hole-in

*In response to this move, on Saturday night of Summit '11, Steve 'No Show, Fo Sho' Hale "announced, loudly and proudly, his 'commitment' to a "big night" on Saturday night of the '12 Summit. To provide structure to the evening, John and his baby brother, Ben, selected teams for the first-ever Summit 'Case Race'! There is little doubt that Steve will serve as the anchor for whatever team he is on.

A Word from the Director

-one [Editor's Note: In all the hullabaloo following his round, Bo inadvertently forgot the traditional post hole-in-one round of drinks for his companions. We all know Bo, and he would never forgive himself if we let him forget to fulfill such a classic and classy obligation. In the spirit of compassion for Bo's sense of obligation, let's all work together to remind him this year, so that he can, finally, cross this off his list.] and sank to new lows when his ongoing battle with inner-demons forced him to resort to putting with his driver. While Bo was vanquishing his demons, Woody was vanquishing Bo, his number one son, before being put down by his number two, Ryan. Ryan had his own issues. On two occasions, Ryan started his round in crisp, clean slacks, only to end it covered with black mud and looking like a character off *Big Shrimpin'* after attempting to extract errant shots from the marsh. Speaking of dirty, after closing out John 7/5 and proceeding to dump the last 5 holes (6 over), Steve showed us how fast those little legs of his could go as he ran, squealing with delight, from a determined John who had his sights on personally taking Steve for a swim in the pond (or pool . . . Pond would've been good for them.). They both ran out of gas and collapsed in a giggling heap before providing any real comedy. As a group, however, we were glad to see John take the time to bother with anything after his round, knowing that Galaga was waiting for him back at the house. More than once, eleven people assembled for dinner, Yankee Swap, etc, only to find John sitting on his little stool massaging his carpal tunnel between levels— a habit that, from what I understand, has persisted long since his return from Myrtle Beach.

Then there is Joe who is ever-ready to provide encouragement to those less skilled than him, like when he consoled Ken with the words, "Hang in there. I remember when I was where you are." Our understanding is that Joe will be offering his free 'swing clinic' again this year on the driving range before each round. If you are one of the four fortunate enough to have him as a riding partner, you can look forward to a free 'playing lesson' as well. Why wait until after your round to fix multiple swing flaws when, by then, it's too late? Joe will help you before, during, and after your round to make sure you think of everything— even if you're trying not to! *The Summit* is currently in negotiations with Joe's people for a *Joe's Teaching Corner* segment in future issues. Stay tuned. We'll keep you posted!

Procedurally, we also learned a few things at the '11 Summit. It turns out that the Battle of the Byes was a non-issue, so it is no more. The resulting change, however, is that those receiving a bye on Day 1, do not re-

A Word from the Director

ceive a handicap adjustment on Day 2. We also learned that there are enough appealing aspects of The Draft and The Face-Off to keep them both for at least one more year. This year, everyone needs to bring both a solid black and a solid white shirt for the final day. You will be assigned a shirt color based on the team on which you end up. I was told we need to do a better job of updating the group as to the status of various multi-day events and reminding everyone of the various contests, formats, and activities scheduled for the day. That should be an easy fix, and one for which I would like to enlist the aid of everyone in helping me to communicate.

The Summit has evolved and flourished because of both its refusal to think like other 'golf trips' and its willingness to rethink what it does and change what makes it better. Evolution results from trial and error which results from suggestions and even constructive criticism. Evolution does not result from complaints—devolution does. Complaints are like faults that rumble and grind underground while slowly weakening foundations. Complaints are about problems; suggestions are about solutions.

The Summit is like no other and is, invariably, the shortest five days of our year. Let's make the most of this brief time we have by working together as part of a solution to our real-world stress and worry. Let's recognize and appreciate this 5-day escape for what it is and its role in our lives. Let's try to remember how full the glass really is. And, most of all, let's get ready to rumble at the Summit!

— *Bart Edmunds*

Lodging & Arrangements

Legends Golf & Resort

**1500 Legends Drive
Myrtle Beach, SC 29579
(800) 299-6187**

Participants will share a luxury villa conveniently situated in the heart of beautiful Myrtle Beach, SC. The Legends Golf & Resort offers five of the best golf courses available in the Myrtle Beach area and the state of South Carolina. Centrally located just off Highway 501 in Myrtle Beach, Heathland, Moorland, and Parkland courses are nestled within the Scottish-inspired Legends Golf & Resort. Legends' Oyster Bay course is on the northern end of Myrtle Beach's Grand Strand in Sunset Beach, N.C., while Heritage is on the southern end in Pawley's Island, S.C.

The excellence of the resort does not end with our award-winning courses. It carries over to our golf villas, which are surrounded by the Parkland Course. We have taken great care in both the condition of our courses and villas.

We have created the feel of a Scottish Village in which everything that you need is available and accessible. We consider our villas the best that Myrtle Beach has to offer. You will not only enjoy the golf, but also the serenity of our resort. The result is a terrific combination of world-class golf and well-appointed, spacious condominiums.



Centrally located within our resort is our exclusive Ailsa Pub named after the Ailsa Craig, a famous Scottish landmark off the Turnberry Links, where you can gather with friends, watch the game on our 16 High Definition TVs and relax after an exhilarating day on the links, or simply enjoy the adjacent pool and hot tub. Everywhere you turn, you're surrounded by exceptional amenities and a professional staff dedicated to providing you with the finest golf vacation you have ever experienced.

Resort guests will enjoy preferred tee times and a hearty breakfast buffet. In addition, we have a world-class 30-acre lighted practice facility and our very own Scottish Tavern, the Ailsa Pub.

Lodging & Arrangements

We truly believe that the Legends Resort offers each of our guests the finest golf accommodations and value on the Grand Strand.

- Each villa has 2 or 3 bedrooms with 2 full baths
- Two beds per room
- Large living and dining room
- TV in each room
- Free high speed internet
- Washer and dryer
- Dishwasher
- Fridge with ice maker
- Fully equipped kitchen with a microwave oven
- Well trained and friendly staff

Plan to arrive at the resort by noon on the afternoon of **Friday, March 16, 2012** for a complimentary practice round arranged and negotiated for by Benjamin Fry. We will checkout prior to the final round on the morning of **Tuesday, March 20, 2012**.

In addition to the aforementioned accommodations, tournament entry fee includes a practice round on Friday plus four Tournament rounds of golf with cart on four luxurious Grand Strand area courses, free range balls, free breakfast each morning, free lunch each day, some free drinks, tournament banquet, tournament gifts/souvenirs, taxes/tips, and over \$1,000 in daily and tournament cash prizes.

Balance of entry fee is due one month prior to the event—February 16, 2012 (As in NOW!). Final payment of \$500.00 should be made payable to Bart Edmunds and can be mailed to P.O. Box 20392, Roanoke, VA 24018.

Over \$100.00 in prize-money will be awarded each day with another \$250 awarded to the individual winners on the final day of The Summit.

Afternoon rounds are the responsibility of individual participants for those interested in prolonging the experience. The only additional expenses relate to out-of-pocket expenditures for food, drinks, souvenirs, the Calcutta, wagers and side-action, and/or entertainment (if you like that sort of thing).

Handicapping, etc.

The Summit Handicap System®

Initial handicaps have been determined by calculating 90% of last year's tournament ending handicap. Individual handicaps will be adjusted daily by one-third (33%) of the difference between a participant's actual score and his most recent handicap.

EXAMPLE: 2010 Ending Handicap = 11. 2011 Initial Handicap: $11 \times 90\% = 10$. 10 handicapper shoots 14 over par. Adjustment would be 1.33 ($(14-10=4)/3=1.33$), rounded down to 11.

 New in 2012!

Amendment 2012-01: Participants receiving a bye in the Play-in Round, will neither suffer nor benefit from a handicap adjustment as a result of their Day One score. In other words, their handicap will not change for Day Two.

Amendment 2010-01: FOR HANDICAPPING PURPOSES ONLY, once a match is closed-out, neither competitor may score more than a bogey on any remaining hole in that round

Amendment 2009-01: FOR HANDICAPPING PURPOSES ONLY, no more than a double-bogey will be counted on any individual hole for single-digit handicappers, and no more than a triple-bogey will be counted on any individual hole for double-digit handicappers.

General Information

1. USGA rules prevail
2. No mulligans
3. Ball may be moved one club-length in *own* fairway
4. When in doubt about lost or out-of-bounds ball, play provisional
5. Double-par stroke limit per hole (No limit for match play purposes)
6. In case of rules disagreement, play second ball. Committee will decide after the round
7. Tie breaking procedure:

Where permitted by *PRIOR* approval of Pro Shop, matches tied after 18 holes will be decided by sudden death playoff to begin immediately following completion of the 18th hole at the sole discretion/direction of the Pro Shop. If a playoff is not permitted and/or reasonable for completion IMMEDIATELY FOLLOWING THE ROUND, the classic Summit tie-breaker will be applied as follow:

- A. Last three holes
- B. Last six holes
- C. Back nine
- D. Low net for round
- E. Low net on *randomly* drawn hole
- F. Two out of three "Rock, Paper, Scissors" (no dynamite... that's silly).

Daily Contests

SKINS

TOTAL PURSE: \$144.00

- Classic \$2.00/hole skins game with carryovers
- Skins awarded to individuals for winning a hole outright versus the field.
- Orphaned skins at the end of a rounds 1-3 will be carried to the next day
- Orphaned skins at the end of the round 4 will be awarded to the individual winning the most skins for the tournament
- Skins will be paid at the end of each round
- Full handicaps will be used in this event.

STABLEFORD (4-Man/2-Man)

TOTAL PURSE: \$100.00

- Points are awarded to team based on individuals' scores as follows:

DOUBLE EAGLE:	16
EAGLE:	8
BIRDIE:	4
PAR:	2
BOGIE:	1
DOUBLE BOGIE:	0
TRIPLE BOGIE+:	-1

- Team accumulates points throughout round
- Highest cumulative point total wins
- No tie-breaker. All ties split purse
- Full handicaps will be used in this event.

Daily Contests

FOUR-MAN BEST BALL

TOTAL PURSE: \$60.00

- Best 2 individual scores from four-man team on each hole used for team score.
- No tie-breaker. All ties split the purse
- Full handicaps will be used in this event.

DUAL-DAY, DOUBLE-DUDE DUEL

TOTAL PURSE: \$90.00

(1st: \$60/2nd: \$30)

- At the conclusion of Round 2, two-man teams will be objectively determined for the final two rounds in this net best ball event.
- Best individual score each hole is used to determine team score. Team with the lowest total net best-ball team score for the final thirty-six holes wins.
- No tie-breaker. All ties split the purse.
- Full handicaps will be used in this event.

THE MELEE

TOTAL PURSE: \$45.00

(1st: \$30/2nd: \$15)

- Final day event for the ten individuals eliminated from Matchplay competition.
- Low net individual score for the round wins
- No tie-breaker. All ties will split the purse.
- 1st Place: \$30.00; 2nd Place: \$15.00
- Full handicaps will be used in this event.

Daily Contests

FACE-OFF

TOTAL PURSE: 6 Sleeves of Pro-V's

(Bring Both a Solid Black and a solid White Shirt for this Event.)

- Based on final day pairings, two teams will face-off in a series of six head-to-head matches.
- Low net score wins the hole.
- Each match is worth 1 Team point.
- Competitors in matches ending 'all square' will each receive 1/2 Team point.
- Full handicaps will be used in this event.

THE DRAFT

TOTAL PURSE: 6 Sleeves of Pro-V's

- SMC Finalists will serve as captains to draft teams of six
- Winner of coin toss can decide to choose first or defer
- Captain choosing second also gets third and sixth pick
- Competitors in matches ending 'all square' will each receive 1/2 Team point.
- Full handicaps will be used in this event.

Calcutta

Participation optional. . . but encouraged

This is the only event that requires additional monetary commitment. Not for the faint of heart, this auction style event allows you to profit from the success of others—regardless of your own abilities.

ENTRY FEE: \$10.00

How It Works

- Contest is based on individual scores over two-day period consisting of Sunday and Monday morning rounds only
- Adjusted Summit handicaps will be used for this event.
- Calcutta participants bid on Summit contestants based on their anticipated performance.
- Calcutta participants must open bidding on themselves at \$20.00. Bidding then proceeds in \$5.00 increments.
- Calcutta participants are required to own at least 25% of themselves.
- Purchaser is obligated to sell up to 50% back to contestant at his request.
- Purchaser will receive a 20% discount on total amount invested in participants other than himself.
- Purchaser is responsible for all money related to their transactions.
- All purchases must be settled in cash at conclusion of auction.
- Prize-money will be paid as follows:

		<u>2011</u>	<u>2011</u>	<u>2011</u>
		<u>Prizes</u>	<u>Winners</u>	<u>Owners</u>
1st Place:	55%	\$1,260	Woody	Bart
2nd Place:	30%	\$688	John/Ben	Dave/John
3rd Place:	15%	\$344	John/Ben	Dave/John

The Majors

The Majors" are multi-day events designed to distinguish individuals with extraordinary talent and tenacity. Major events are printed in **GOLD**.

SUMMIT MATCH-PLAY CHAMPIONSHIP (SMC)

REIGNING CHAMPION: Kevin Dill

'11 Runner-up: Steve Hale

PURSE: \$100.00

Runner-up: \$50.00

- Series of three (or four) individual matches beginning Day 1 (or 2)
- All individual matches will be match-play format
- Seedings determined by combination of prior year finish and Round 1 results
- Full handicaps will be used in this event

LOW NET

DEFENDING CHAMPION: Ryan Crush

'11 Runner-up: Ben Fry

PURSE: \$50.00

- Awarded to individual with lowest four-day net score using full handicap

INDIVIDUAL TEAM CHAMPION

DEFENDING CHAMPION: Steve Hale

'11 Runner-up: Ken Rogich

PURSE: \$25.00

- This oxymoronic title is awarded to the individual collecting the most team points over the four-day event

HIGH NET

DEFENDING CHAMPION: Ken Rogich

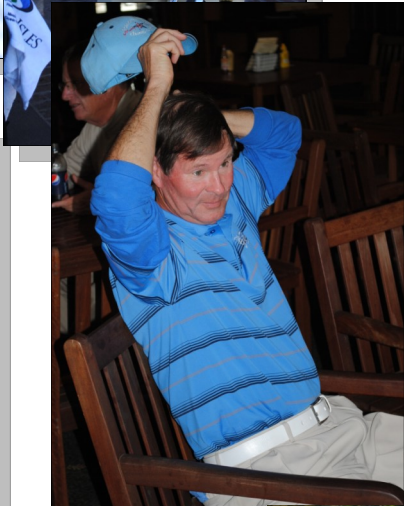
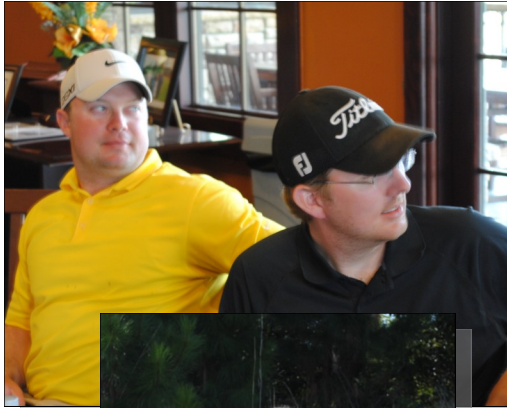
'11 Runner-up: Jeff Parker

PURSE: \$25.00

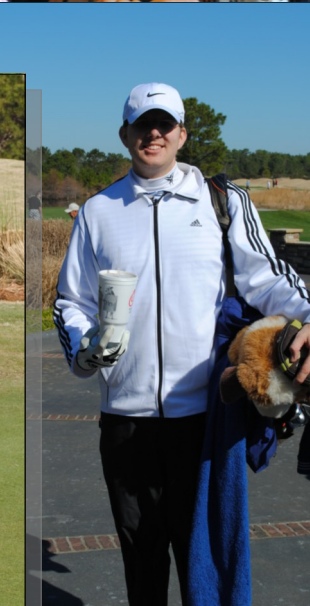
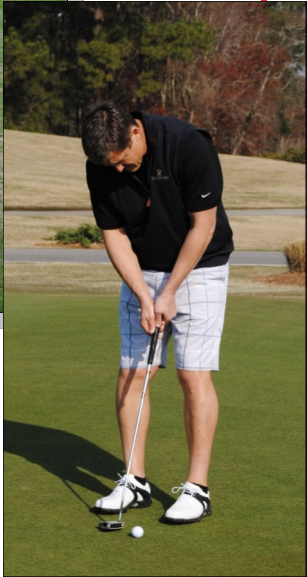
- Awarded to hapless sap with the *highest* four-day net score using full handicap

NOTE: Player can win only one major. Prizes awarded as follows: SMC Champ, Low Net, Individual Team Champ, High Net Champ.

Summit Photo Gallery



Summit Photo Gallery



Summit Photo Gallery



Interview with a Champion



Having recently completed step-2 of his 12-step rebuilding process [Editor's Note: Our understanding, here at *The Summit*, is that the first step toward making Kevin a better man was of more of a 'personal nature' and completed last year prior to and as a condition of marriage.], Kevin will be in recovery for at least 28 days followed by an extended period of rehab; thus making him the first SMC Champion unable to defend his Title.

Given their close working relationship, *The Summit* thought it appropriate to allow Dr. Wells the honor of asking

Kevin a few questions regarding past, present, and future Summits. What follows is a transcript of that interview.

Dr. Rudy Wells: How does it feel to join the ranks of winners of multiple Summit Titles?

Kevin Dill: To merely be mentioned in the same breath with the likes of Bart Edmunds, Steve Hale or Woody Deans is a distinct honor and privilege. The aforementioned individuals are iconic figures whose reputation is beyond approach [Editor's Note: Not to be confused with the more common expression 'beyond reproach'].

Dr. Wells: In your opinion, why do a handful of individuals seem to dominate the list of Summit Champions when so many haven't come close to winning one?

(Continued on page 66)

The \$60,000 Man

By Oscar Goldman
With Dr. Rudy Wells

In 1974, ace test pilot, Colonel Steve Austin, was severely maimed when the prototype spaceship he was piloting suffered a horrific crash. Through the brilliance of Dr. Rudy Wells, Austin was rebuilt— better than before.

While still in the early stages, Kevin Dill, with the help of an aging Dr. Wells, has launched into a similar rebuilding program. A program which, over the next twenty years, promises to make Kevin better than before and, quite possibly, as good as other normal men.

SMC Champion



Kevin Dill

Van Klanner

Reigning SMC Champion

2010 Short-Game Cham-
pion

2008 SMC Champion

2008 Short-Game Cham-
pion

2007 High Net

2007 SMC Runner-up

2006 Short-Game Cham-
pion

2005 Low Net Champion

Handicap: 3

Projected Odds: OTB

Summit Career

<u>Titles</u>		Matchplay Record:	10-4 (.714)
SMC Champion:	2	Rank:	1
Low Net:	1	Average Gross Round:	82.68
IT Champion:	0	Rank:	3
High Net:	1	Average Net Round:	82.71
SMC Runner-up:	1	Rank:	8
Short-Game:	3	Average Net Summit:	+43.79
		Rank:	8
		Career Earnings:	\$631.25
		Rank:	4
		Average Earnings:	\$90.18
		Rank:	1

Low Net

Editor's Note: For the first time in Summit history, assignments were delegated to committee. Any objection or offense to assignments should be addressed, in writing, to Committee Chairman, Benjamin Fry, and his little friend too!, John Bradberry.



Ryan Crush

#1 Seed

**Reigning Low Net
Champion
2010 Low Net Champion**

Handicap: 0

Day 1 Matchup: Bye

Assignment:

Morning stretching and fitness coach;

Toilet Paper distribution

Roommate: John Bradberry

Projected Odds: 3:1

Summit Career

<u>Titles</u>			
SMC Champion:	0	Matchplay Record:	3-2(.600)
Low Net:	2	Rank:	4
IT Champion:	0	Average Gross Round:	78.5
High Net:	0	Rank:	1
SMC Runner-up:	0	Average Net Round:	78.5
		Rank:	1
		Average Net Summit:	+26.5
		Rank:	1
		Career Earnings:	\$176.00
		Rank:	13
		Average Earnings:	\$88.00
		Rank:	3



MOST SIMILAR TV CHARACTER

WHAT I THINK

General Holden from *Army Wives*



In my younger years, I would say I was most like Mitch Buchannon (David Hasselhoff) from the hit TV series, *Baywatch*. However, now I think I'm most like General Holden from Lifetime's (channel for women) tremendous TV series *Army Wives*. General Holden is the pack leader at Ft. Marshall, and even though I don't command a military base (probably a good thing), I do intend on commanding all of the other Summeeters this year that seek guidance and leadership— mainly Steve and Ben.

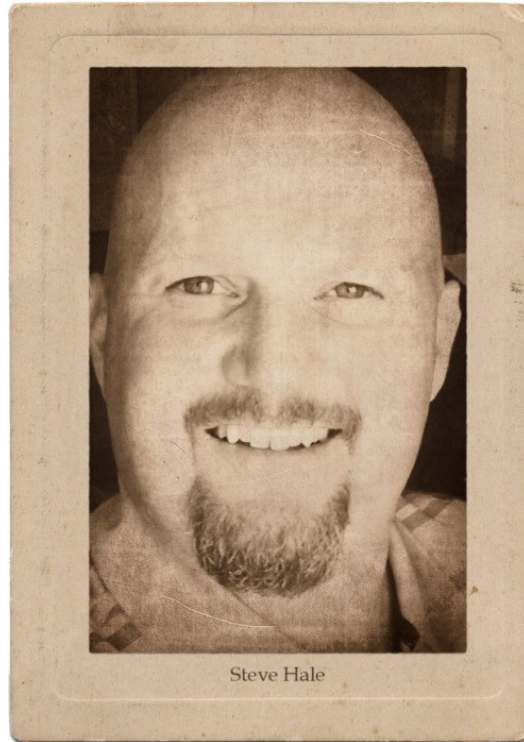
WHAT OTHERS THINK

Joey Tribbiani from *Friends*

The resemblance of Joey and Ryan is a simple phrase both say to hit on woman....."How yooooou doing?" The simplicity yet effectiveness of such a phrase is all in the delivery. Just like having to make a 4 footer to win, you better step and up and deliver with confidence.



Individual Team Champion SMC Runner-up



Steve Hale

#2 Seed

- 2011 Ind Team Champion**
- 2011 SMC Runner-up**
- 2010 SMC Champion**
- 2006 Low Net Champion**
- 2005 SMC Champion**
- 2003 Low Net Champion**
- 2002 SMC Champion**
- 2001 Low Net Champion**
- 2001 SMC Runner-up**

Handicap: 2

Day 1 Matchup: Bye

Assignment:

Summit Gift Coordinator, PhilBilly's Chaperone

Roommate: Phil McQuain

Projected Odds: 8:1

Summit Career

<u>Titles</u>	
SMC Champion:	3
Low Net:	3
IT Champion:	1
High Net:	0
SMC Runner-up:	2

Matchplay Record:	16-9(.640)
Rank:	2
Average Gross Round:	80.9
Rank:	2
Average Net Round:	80.5
Rank:	2
Average Net Summit:	+43.21
Rank:	4
Career Earnings:	\$870.75
Rank:	2
Average Earnings:	\$72.56
Rank:	4



MOST SIMILAR TV CHARACTER

WHAT I THINK

All Bundy from *Married with Children*

I feel like the TV character that I most resemble would be Al Bundy from *Married With Children*. I think that like Al, I am somewhat of a free spirit



who says what other men think but will not say. This often times gets me into uncomfortable discussions, but just like Al, once I've said my piece and everyone digests it and comprehends the truthfulness of it, all is restored and back to normal usually within the half hour. I would like to think we are both over-achievers, taking the hands we were dealt and making the most of them. I guess another likely comparison that could be made is that I, like Al, have a smoking hot wife that thinks a flash drive is a Truth or Dare challenge to drive around the block nude, an incredibly beautiful 17 year old daughter who is clueless to

the intentions of most teenage boys, and a 12 year old son who thinks his goal in life is to make sure that his sister doesn't achieve hers! Yep, I could step right into that studio and pull it off without ever reading a script.

WHAT OTHERS THINK

George Costanza from *Seinfeld*

I really struggled with coming up with a TV character that best exemplifies my partner in crime, Steve Hale. Many characters popped into my head....Homer Simpson.....for obvious reasons; or Al Bundy from Married

with Children, due to Steve's penchant for relishing in his past high school football glories as well as his personal hygiene, but I wanted to dig a little deeper, find someone who captures the true essence of not only Steve's physical attributes, but also his personality traits and habits. So, I started to think, what words describe Mr. Steven Hale. The words that kept swirling in my brain were: "short", "stalky" [*Editor's Note: Not to be confused with the more derogatory, 'stocky'*], "slow-witted" and "bald". I also kept coming back to Steve's penchant for stretching the truth, and I remembered a famous line from TV...."It is not a lie, if you believe it". And then it hit me, there is only one other short, stalky, slow-witted, bald man that has graced the small screen. So, ladies and gentlemen, my character choice is Thee George Co-

stanza from *Seinfeld*. I truly cannot think of a better choice; both characters love to wear sweat pants, both dream of eating an entire block of cheese, and both have trouble concentrating. One episode, George gave up ob-



sessing about sex and quickly turned into a genius. I often think that if Steve would quit obsessing about beating me in golf, he could become quite intelligent. On the flip side, George and Steve also possess some great qualities— both are extremely loyal to their friends, both know where all the great public restrooms are in any city, and both have never met a stranger. Both are amazing characters, and we have all been blessed to have shared in their life stories! Steve Hale/George Costanza...Lord of the Idiots!

Low Net Runner-up



Ben Fry

Black Summiteer

#3 Seed

2008 Low Net

Handicap: 4

Day 1 Matchup: Bye

Assignment: Practice round Czar;
Golf and Lodging arrangements; Free Breakfast Guy

Roommate: Phil Dick

Projected Odds: 10:1

Summit Career

<u>Titles</u>		Matchplay Record:	5-6(.455)
SMC Champion:	0	Rank:	10
Low Net:	1	Average Gross Round:	88.42
IT Champion:	0	Rank:	8
High Net:	0	Average Net Round:	82.35
SMC Runner-up:	0	Rank:	5
		Average Net Summit:	+42.38
		Rank:	3
		Career Earnings:	\$257.50
		Rank:	12
		Average Earnings:	\$42.92
		Rank:	12



MOST SIMILAR TV CHARACTER

WHAT I THINK

Marshall from *How I Met Your Mother*

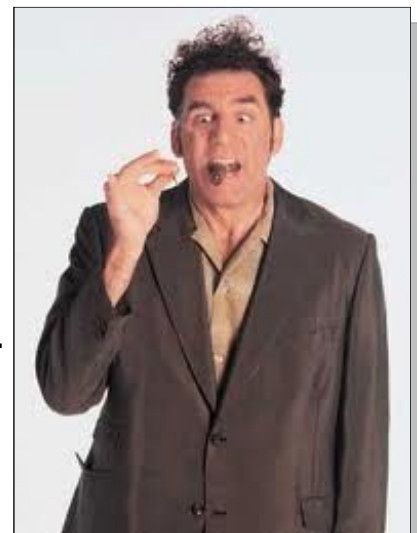


My Character is Marshall from *How I met your Mother*. Marshall is a huge sports fan and loves nothing more than his wife's rack. However, Marshall has been known to be more on the "sensitive side" and, for some reason, that same ridiculous accusation has been made of me.

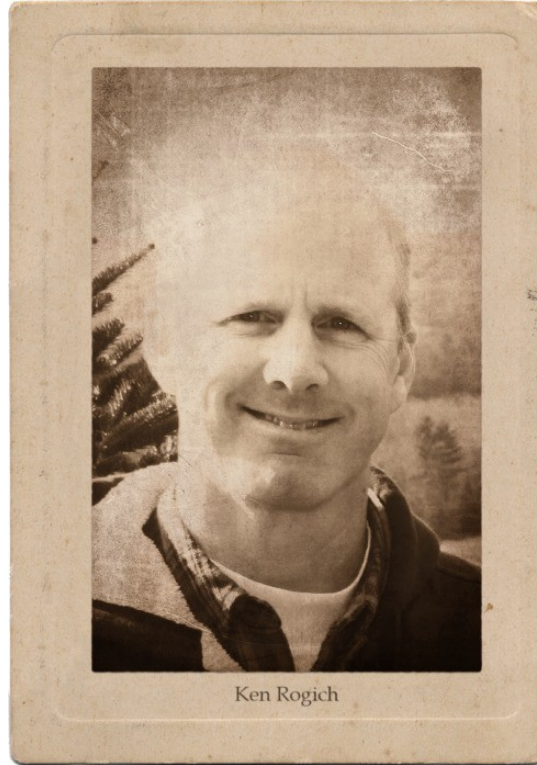
WHAT OTHERS THINK

Kramer from *Seinfeld*

Ben Fry reminds me of Kramer on *Seinfeld*. Tall, lanky, and always falling over something. If you ever watch *Seinfeld*, then that is all that needs to be said.



High Net (aka: Hapless Sap)



Ken Rogich

#4 Seed

2011 High Net

2008 SMC Runner-up

2006 Ind Team Champion

2003 SMC Champion

2002 Low Net Champion

2002 SMC Runner-up

2000 Ind Team Champion

Handicap: 23

Day 1 Matchup: Bye

Assignment: Skins calculations; Lead Tree Hugger.

Roommate: Chris Colton

Projected Odds: 17:1



Summit Career

<u>Titles</u>		Matchplay Record:	10-10
SMC Champion:	1	(.500)	
Low Net:	1	Rank:	7
IT Champion:	2	Average Gross Round:	102.34
High Net:	1	Rank:	14
SMC Runner-up:	0	Average Net Round:	84.04
		Rank:	14
		Average Net Summit:	+49.13
		Rank:	14
		Career Earnings:	\$978.75
		Rank:	1
		Average Earnings:	\$88.98
		Rank:	2

MOST SIMILAR TV CHARACTER



WHAT I THINK

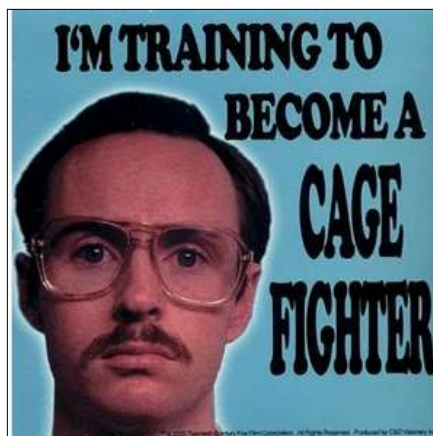
Steve Austin from *The Six Million Dollar Man*

The original Steve Austin – “*The Six Million Dollar Man*”. Good looking, remarkable physical abilities, leading money winner at the Summit, best eyesight in the Summit, and fastest runner in the Summit... that about sums it up!

WHAT OTHERS THINK

Kip Dynamite from *Napoleon Dynamite*

While not a TV character, Ken reminds me of Kip Dynamite from the *Napoleon Dynamite* movie. They look very similar and have many of the same mannerisms. In the movie, Kip is 32, currently unemployed, and boasts of spending hours in internet chat rooms with "babes" and training to be a cage fighter.



Happy

Happy is the joyous dwarf. He is the fattest of the seven and is always laughing.



Joe Assaid Van Klanner

- 2008 Individual Team Co-Champion**
- 2006 SMC Champion**
- 2005 SMC Runner-up**
- 2004 Ind Team Champ**
- 2002 High Net**
- 2001 High Net**
- 2000 SMC Runner-up**

Handicap: 13
Day 1 Matchup:
 John Bradberry (4)

Assignment: Check-In Check-out coordinator; Range Token Distribution

Roommate: Bart Edmunds

Projected Odds: 13:1

Summit Career

<u>Titles</u>		Matchplay Record:	7-12(.368)
SMC Champion:	1	Rank:	12
Low Net:	0	Average Gross Round:	101.42
IT Champion:	2	Rank:	13
High Net:	2	Average Net Round:	82.73
SMC Runner-up:	2	Rank:	9
		Average Net Summit:	+43.88
		Rank:	9
		Career Earnings:	\$709.75
		Rank:	3
		Average Earnings:	\$59.15
		Rank:	8



MOST SIMILAR TV CHARACTER



WHAT I THINK

Klinger from *Mash*

I'm most like Corporal Maxwell Klinger from *MASH* played by Jamie Farr. He is Lebanese like myself and we both enjoy wearing women's clothing and engaging in other "crazy" stunts, but never at the expense of others.

WHAT OTHERS THINK

George Costanza from *Seinfeld*

Joe reminds me most of George Costanza from *Seinfeld*. Using the world renowned source (Wikipedia), I was able to cross reference the entries for George Costanza and Joey Assaid (yes, Joe does in fact have his own Wikipedia page). It is uncanny the similarities...see below:

George Costanza page

George is [neurotic](#) and self-loathing. Throughout *Seinfeld's* [first season](#), George was portrayed as a moderately intelligent character but gets less sophisticated, to the point of being lazy...but despite all of his shortcomings, George is "pretty content with himself".^[19]

Joe Assaid page

Joe is an [extremely neurotic](#) fellow often portraying self-loathing characteristics. Most of the Summit participants view Joe as somewhat bright and

fun to be around, but slightly uncultured and gauche (citation ^ Summit – *Wikipedia page*). However, in an odd twist, Joe is not short on self-confidence, although it is mostly misplaced. Example: Joe typically will bid his own value up in the Calcutta, so that he can ultimately pay more for himself, forgetting that it's not what you pay out, but what you get back that counts. ^[8]

George Costanza page

George exhibits a number of negative character traits, among them stinginess, selfishness, insecurity, and [neurosis](#). George also loves to tell people what to do. In particular, George has tremendous insecurity concerning his receding hairline

Joe Assaid page

Joe has been known at times to be very stingy with his money to the point of selfishness. Summit participants tell the story of Joe almost coming to blows with fellow golfers over \$1.21 at a [calabash](#) seafood house in Myrtle Beach. Additionally, Joe is the resident "know it all" on the golf trip. He always gives stroke, grip, strategy and shot making advice freely and liberally to any and everyone within earshot. Quick with a swing suggestion or "little Joey pointer" (typically as the club is being pulled back), Joe has cost his partners more strokes than they care to count. One of Joe's recent partners in the "[Double Dude Double Dog Three Day Five Course Composite Challenge](#)" implored Joe to please give the other team advice so he and Joe might have a shot at winning (unfortunately he could not contain himself and they lost). Additionally, Joe's insecurities, particularly as it relating to his receding hairline, are world renowned.

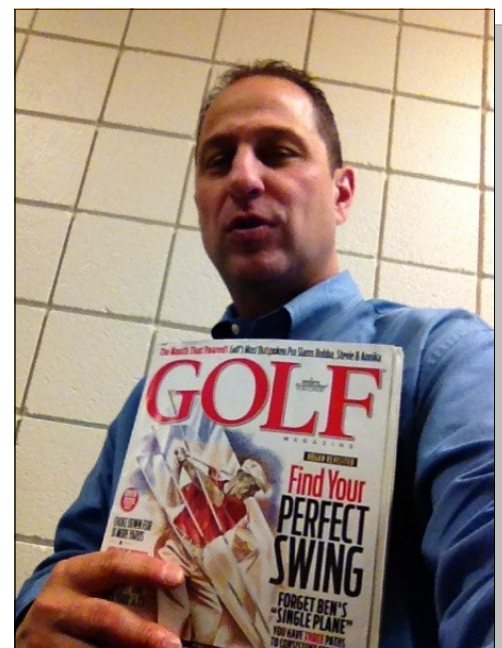
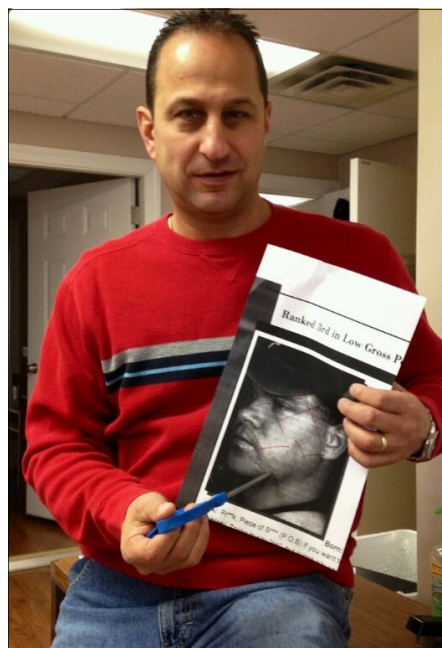


George Costanza page

George and Jerry have been best friends since meeting in high school gym class. The extreme closeness of their friendship is occasionally mistaken for [homosexuality](#). "[The Outing](#)" deals with a reporter from a [New York University](#) college paper mistaking Jerry and George for a homosexual couple, and, in "[The Cartoon](#)", George dates someone whom Kramer insists is merely a "female Jerry". When George is forced to note to himself that the idea of a female Jerry with whom he can have a close personal relationship and also a sexual relationship would be everything he has ever wanted, George, in horror, breaks off his relationship with the woman.

Joe Assaid page

Joe and Bart have been best friends since their peewee dodge ball days. Many people have inquired about the relationship through the years and have mistaken it for being more than "just a friendship"...(specific citations deleted due to Wikipedia website rules). Summit participants have wondered aloud why Joe is considered Bart's "right hand man" for the golf trip. They spend countless hours behind closed doors in "planning sessions" leading up to the trip which caused one Summit participant to remark that Joe and Bart seem like an old married couple.



Bashful

Bashful is the shyest of the dwarfs, and is therefore often embarrassed by the presence of any attention directed at him. He frequently annoys Grumpy, though not as much as Doc.



Bo Blankenship *Black Summiteer*

2009 SMC Runner-up
2007 Low Net Champion
 2007 Short-Game Champ
 2005 Short-Game Champ
2004 Low Net Champion
 2004 Short-Game Champ
2003 High Net
2000 Low Net Champion

Handicap: 7
Day 1 Matchup:
 Phil Dick (10)

Assignment: Gaming Coordinator
Roommate: Woody Deans
Projected Odds: 7:1

Summit Career

<u>Titles</u>			
SMC Champion:	0	Matchplay Record:	9-10(.474)
Low Net:	3	Rank:	8
IT Champion:	0	Average Gross Round:	85.22
High Net:	1	Rank:	5
SMC Runner-up:	2	Average Net Round:	82.82
Short-Game:	3	Rank:	12
		Average Net Summit:	+44.05
		Rank:	10
		Career Earnings:	\$609.75
		Rank:	5
		Average Earnings:	\$50.81
		Rank:	10



MOST SIMILAR TV CHARACTER



WHAT I THINK

Lt. Columbo from *Columbo*

I am most like Columbo. As they say, advisors in our firm are initially both reassured and distracted by my circumstantial speech and increasingly irritating pestering behavior. I am always initially underestimated by my opponents/clients/advisors and am often disheveled in my appearance.

WHAT OTHERS THINK

Alex Keaton from *Family Ties*

If you have wondered what happened to Alex P. Keaton he became Bo. Alex and Bo both worship Ronald Reagan & his policies. They are both over-achievers, and just as Alex clashed with the democratic views of his parents, Bo has clashed against Kevin Dill for his views. In the end though, Alex/Bo will put their family and friends ahead of their views no matter how much the others may believe in ObamaCare.



Charlie Harper from *Two and a Half Men*



Bo is like Charlie Harper, formerly of *Two and a Half Men*. Like Charlie, Bo is a fan of the bachelor lifestyle, late night partying, and fine liquor. In fact, he would really like to attend Club Mur Mur in Atlantic City and sit in the VIP with Charlie Sheen at some point in the near future.



Bo accuses Steve of, "always taking my stuff!"

Grumpy

Grumpy is as his name suggests him to be. He has the biggest nose of the seven and he automatically disapproves of Snow White for the mere fact that she is a woman. However, though initially too proud to show it, deep down he cares perhaps the most for her safety.



John Bradberry

Black Summiteer

2010 SMC Runner-up
2009 Low Net Champion

Handicap: 4

Day 1 Matchup:

Joe Assaid (13)

Assignment:

“Case Race” coordinator; Big Dick’s chaperone.

Roommate: Ryan Crush

Projected Odds: 6:1

Summit Career

<u>Titles</u>			
SMC Champion:	0	Matchplay Record:	4-6(.400)
Low Net:	1	Rank:	11
IT Champion:	0	Average Gross Round:	83.85
High Net:	0	Rank:	4
SMC Runner-up:	1	Average Net Round:	82.75
		Rank:	10
		Average Net Summit:	+43.41
		Rank:	5
		Career Earnings:	\$364.50
		Rank:	10
		Average Earnings:	\$60.75
		Rank:	7

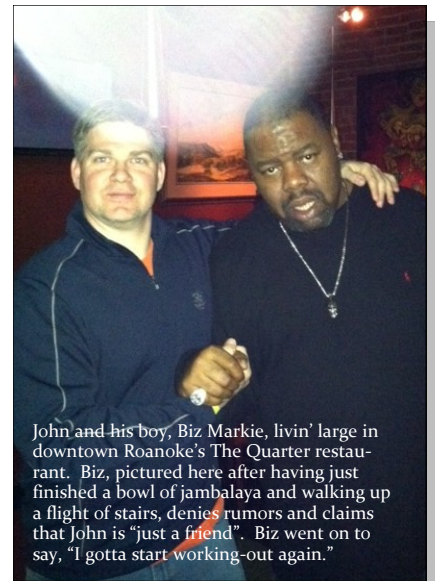


that he could take anyone in the room right now— no matter where that room is located. Both share awkward and uncomfortable conversations with women that leave everyone with that "not so clean feeling". John and House also share the belief that no matter what, they are always right. Like House, John will do everything he can for you to "save your life" and still leave you thinking he is an *ss. Physically there is no comparison. This is all about the attitude and demeanor... oh and a slight limp. House's qualities will serve John well this year in The Summit because in his mind he will win no matter what the scorecard actually says.

Artie from The *Larry Sanders* Show



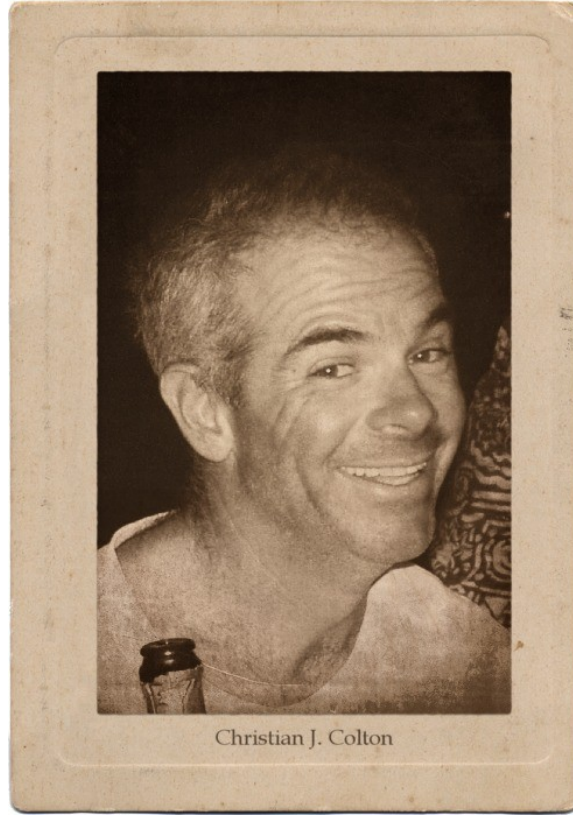
John is most like Artie from the Larry Sanders show. Artie's favorite drinks are "Salty Dogs" and Glenlivet Scotch Whiskey. Artie also mentions several times that he thinks he killed a man like Melanie, the shows' producer, in Korea. I've heard John mention several times that he may have killed a man like Tracy Sledd in Korea.



John and his boy, Biz Markie, livin' large in downtown Roanoke's The Quarter restaurant. Biz, pictured here after having just finished a bowl of jambalaya and walking up a flight of stairs, denies rumors and claims that John is "just a friend". Biz went on to say, "I gotta start working-out again."

Sneezy

Sneezy's name is earned by his extraordinarily powerful sneezes, which are seen blowing objects (including his brothers) across a room. He has the shortest beard of the seven.



Chris Colton

2010 High Net
2006 High Net
2001 Individual Team Champ

Handicap: 22
Day 1 Matchup:
Phil McQuain (9)

Assignment: Wake up Calls; Snacks

Roommate: Ken Rogich

Projected Odds: 20:1

Summit Career

<u>Titles</u>			
SMC Champion:	0	Matchplay Record:	6-7(.462)
Low Net:	0	Rank:	9
IT Champion:	1	Average Gross Round:	106.8
High Net:	2	Rank:	15
SMC Runner-up:	0	Average Net Round:	84.37
		Rank:	15
		Average Net Summit:	+49.83
		Rank:	15
		Career Earnings:	\$489.00
		Rank:	7
		Average Earnings:	\$69.8
		Rank:	5



MOST SIMILAR TV CHARACTER



WHAT I THINK

Superman from *Superman*

I am most like Superman – there's nothing I can't do! Look for me at the Summit!

WHAT OTHERS THINK

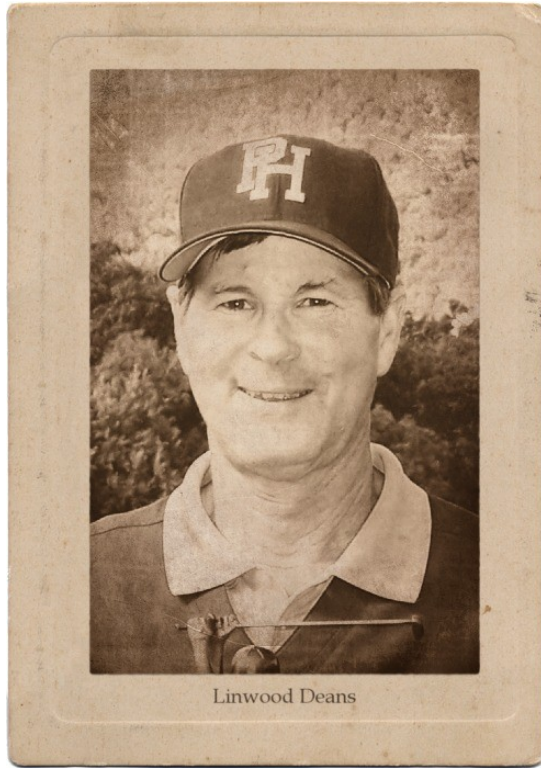
Professor Roy Hinkley from *Gilligan's Island*

Imagine being a reasonably healthy, semi-attractive man stranded on a tropical island with a 60-year old millionaire and his wife, an overweight Sea Captain and his bumbling, 98 lbs First Mate, an attractive, single mid-western farm girl, and a hot (and obviously a little slutty) movie star. Now, imagine that despite a complete lack of competition and repeated romantic overtures by both young, frisky females, you choose to spend your day working on a ridiculous, white radio and building generators out of coconuts. If, in the history of television, there was ever a character modeled after Chris Colton— it is the Professor.



Doc

Doc is considered the leader of the seven dwarfs, and is presumably the oldest. He wears glasses and often mixes up his words. His job in the dwarfs' mine is to check the authenticity of the many gems.



Woody Deans Van Klanner

1st 3-Time SMC Champion
2009 SMC Champion
2009 Short-Game Champ
2007 SMC Champion
2000 SMC Champion

Handicap: 8
Day 1 Matchup: Bart Edmunds (5)

Assignment:

Skins Payout; Prize Distr. Asst.; Practice round scoring

Roommate: Bo Blankenship

Projected Odds: 12:1

Summit Career

Titles
SMC Champion: 3
Low Net: 0
IT Champion: 0
High Net: 0
SMC Runner-up: 0
Short-Game: 1

Matchplay Record: 15-9(.625)
Rank: 3
Average Gross Round: 89.13
Rank: 9
Average Net Round: 82.11
Rank: 11
Average Net Summit: +43.5
Rank: 7
Career Earnings: \$600.00
Rank: 6
Average Earnings: \$50.00
Rank: 11



MOST SIMILAR TV CHARACTER

WHAT I THINK

Kyle Chandler from *Friday Night Lights*



My TV character is Kyle Chandler. He played Coach Taylor on the series *Friday Night Lights*. My girls call me Coach Taylor because they say he reminds them of me. He is a great coach and really cares for his players. They say that he also looks a little like me and has a good looking wife who goes to all of his games. I can relate closely to him with all the things he goes through on the show. The series is not running now, but ran for 4 or 5 years.

WHAT OTHERS THINK

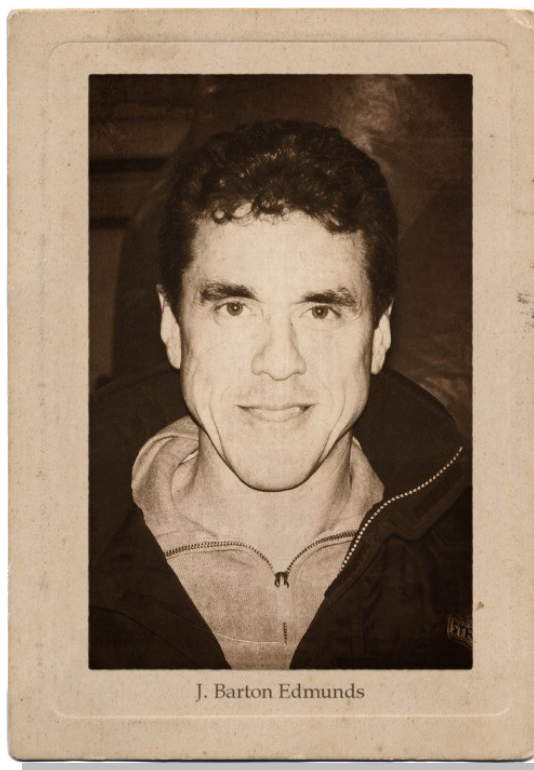
Dr. Niles Crane from *Frasier*

Woody is most like Dr. Niles Crane. Crane has a "fierce streak of competitiveness against his elder brother." This characteristic shows up in Woody's close matches. Crane constantly pines over Daphne in the show. Woody has been known to turn his head for the "right kind" of girl. Niles is also known to "get wound up over the tiny details in life." Does anyone doubt this is so with Woody??



Sleepy

Sleepy is always tired, as attested by his heavy eyelids, and therefore usually appears laconic even in the direst situations. His job at the mine is to haul all the diamonds and rubies by cart to Doc for inspection. He has the longest beard of the seven. Usually he is pestered by a fly, who appears as a background character.



Bart Edmunds
Tournament Director
& All-Round Good Guy

1st 2-Time SMC Champion
2008 Ind Team Co-Champ
2005 High Net
2004 SMC Champion
2001 SMC Champion
2000 High Net

Handicap: 5
Day 1 Matchup: Woody Deans (8)

Assignment: Director; *The Summit* Editor-in-Chief; Handicapping Nazi; (in other words: H.N.I.C.)

Roommate: Joe Assaid

Projected Odds: 8:1

Summit Career

<u>Titles</u>			
SMC Champion:	2	Matchplay Record:	13-10(.565)
Low Net:	0	Rank:	5
IT Champion:	1	Average Gross Round:	85.88
High Net:	2	Rank:	6
SMC Runner-up:	1	Average Net Round:	82.62
		Rank:	6
		Average Net Summit:	+43.46
		Rank:	6
		Career Earnings:	\$465.75
		Rank:	9
		Average Earnings:	\$38.81
		Rank:	13



MOST SIMILAR TV CHARACTER

WHAT I THINK

Black & White Andy Taylor from *The Andy Griffith Show*

This was a somewhat difficult choice given the many comparisons to various TV heroes over the years. There's Joe Mannix from *Mannix*, Thomas Magnum from *Magnum P.I.*, Angus MacGyver from *MacGyver*, Eddie Haskell from *Leave it to Beaver*, Jack Bauer from *24*, Rollo Larson from *Sanford and Son*, and, let's not forget the most current and obvious, Harvey Specter from *Suits*. But, in choosing a character that best epitomizes the simple wisdom and down-to-earth character most often associated with me, I had to go with Andy Taylor. Per *Wikipedia*, *'Andy was depicted as a country-smart sheriff and a caring, nurturing father. [He] regularly used reverse psychology on people making them see the error of their ways. He would help transgressors by enabling them to draw their own moral conclusions.*



Early shows (B&W) depict Andy as having a naive demeanor and "aw-shucks" personality with home-spun humor which, actually, cover a wise and insightful outlook into people and situations, sometimes catching those who misjudge his intelligence off guard. Later shows (color), particularly those after Barney's departure, depict Andy as more serious and stressed by the situations arising in each episode.'

Like Andy, I spend the majority of my time protecting people from their own tendencies and weaknesses. In the context of the Seven Deadly Sins, I'd like to offer a few examples.

Wrath: John is a work in progress as he and I continue to work through his anger issues. His temper has already cost him a beautiful relationship

with Bo's previous assistant and, ultimately, drove her into the arms of another man and another job. He continually tries to pawn *his* problems off on others, and is surprised and angered when they respond negatively. As a result of yoga and work with his life coach, Paul Ross, John is finally getting a handle on the curse that has plagued him throughout his life. Look for a kinder, gentler John at this year's Summit

Greed: It's no secret that Joe can be a little tight with his money. Legend has it that this little guy once headed off to the beach for a full day with only \$.32 in his pocket because he knew that would get him a butter-biscuit and cup of water at Hardee's (if he got there before 10:30am). Though we've gone over it multiple times, he is still intent on taking his money with him. This trait served us all well in the wake of Joe James Taylor rearing Roy Foutz's '78 Pacer when Joe was able to salvage various auto parts scattered over Hwy 50 in Warsaw, NC, but it's also sowed the seeds of discord as when Joe and Marvin Bright (aka: Felix and Oscar) battled over the thermostat and hot water heater throughout the late '80's.

Sloth: Ben, unfortunately, is lazy. Despite the pleas of both John and myself, Ben is, apparently, incapable of putting in a full week's work. Like Odysseus, if the sun is out and Ryan is not watching TV, Ben eschews the responsibilities of family and career for the sirens' song of his golf clubs. I have no doubt, that, as he matures, and better emulate John's work-ethic, he will be fabulously successful. In the meantime, I try to provide him with gentle encouragement as I do my own nine-year-old daughter, Reagan.

Pride: As an Alpha male in a modern, civilized society, rather than beat his chest or tear at rivals' throats, Bo asserts his dominance over weaker males by berating or humbling them in competitive situations (ie: the golf course). Unfortunately, Bo's negative behavior is then reinforced when, much to my dismay, the weaker male backs down and crawls back into the security of Bo's warm embrace. I'm trying to break the cycle by working with Bo on being nicer to his inferiors by acknowledging their feelings— a behavior that he's more than willing to adopt as long as they don't talk back.

Lust: The words lust and Ken have become almost synonymous at The Summit. Ken looks so forward to 'getting away' for a few days of 'R&R' that those old 'inner demons' seem to just burst out of him. Ken attributes much of his lasciviousness to his new diet of kale smoothies which, he says, have given him a vitality that he hasn't experienced since his heydays at William & Mary— what he fondly refers to now as 'the good ole days'. I'm convinced that his condition is nothing that a few days of normal food and rooming with Chris won't cure.

Envy: Chris' affliction, on the other hand, appears to be more deeply ingrained and, therefore, difficult to treat. Poor Chris is smitten with envy—something with which we've dealt ever since he tried to steal my girlfriend, Tara, back in college. He's like that little brother that tries so hard to keep up with the 'big boys', but ends up crying to his mom in frustration. If I can just convince Chris to be happy with who he is and not continually compare himself to or try to be as good as others, he'll be a much happier person.

Gluttony: After losing to Joe (who ate 26 chicken wings) in the highly controversial 2002 'Wing Eating Championship' and shocking the world by losing 56 pounds in just over a month to snatch victory from the jaws of a naïve Ben at last year's, now legendary, weight-loss championship, Steve, more recently, has drifted aimlessly like a ship without a rudder. He's floated from one eating scheme to another in search of the 'magic bullet'. From Adkins to South Beach to Sugar Busters, there's nary a diet he hasn't tasted. He's experimented with the elliptical, cycling, and power-walking, only to throw in the towel with the proclamation, "If I wanted to sweat, I'd sit in a steam room!" He's tried fasting and eating six meals a day, only to find that he's "still hungry". After years of trial and error, he's finally figured out the code! At this year's Summit, you will see a new man in, what we hope will be, his permanent dietary home—veganism. And, don't be alarmed at being awakened by the soft sound of Chinese music and the site of an awkwardly posed, thong-clad Steve and his little sidekick, Phil, as they indulge in the ancient martial art of Tai Chi before hitting the showers.

WHAT OTHERS THINK

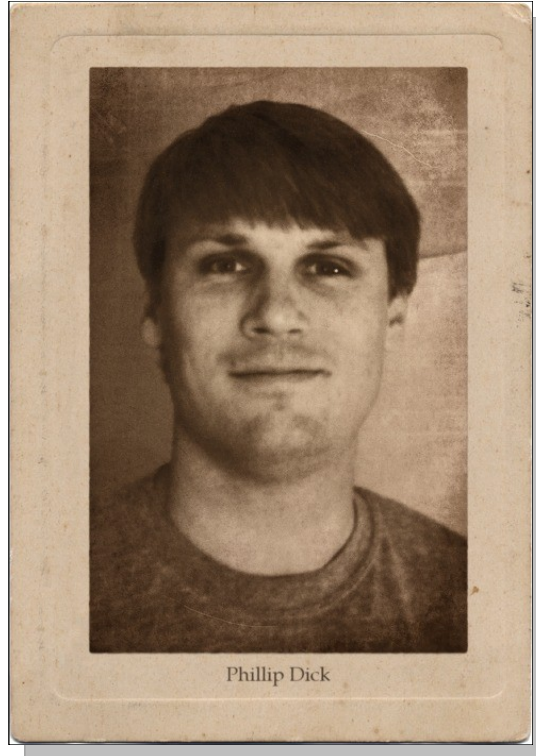
Michael Starsky from *Starsky and Hutch*

Bart is most like Starsky of *Starsky and Hutch*: He thinks he can do anything and he wears bell bottoms! Starsky is flamboyant and believes himself a ladies' man! Look at the clothes they wear – it's an obvious match.



Dopey 1

Dopey is the only dwarf to have no beard at all; he is presumably the youngest of the seven. As his name suggests, Dopey is clumsy. His clumsiness provides comic relief to some of the plot. He is a mute, or at any rate never speaks and does not know whether he can. His job at the mine is to clean up all the unusable jewels and lock up the vault. He is always seen last in line whenever the dwarfs walk to and from work.



Phil Dick

Rookie

Handicap: 10

Day 1 Matchup:

Bo Blankenship (7)

Assignment:

Driving Directions; Dinner Reservations

Roommate: Ben Fry

Projected Odds: 18:1

Born: 6/29/81; Roanoke, VA

“Educated”: Salem HS/Hampden-Sydney

Nicknames: None

Hobbies/Interests: Lacrosse and watching sports on TV

Favorite Beverage: Coke

Favorite Snack: Potato Chips

Superstitions: I don't like to talk about anything positive until after it happens [*Editor's Note: Phil is known as the strong silent type.*]

Greatest Strength: Knowing my limitations

Greatest Weakness: Being too pessimistic or skeptical

MOST SIMILAR TV CHARACTER

WHAT I THINK

Lt. Horatio Caine from *CSI Miami*

I am most like Lt. Horatio Caine from *CSI Miami* because, well, you can just look at the picture and see the striking similarities. Our hair is very similar—his is due to hair plugs, mine is all natural mop-top. The similarities don't



stop at just looks. I would be a great detective since all it requires on TV is some music montages to solve crimes. I would be totally at home in the South Beach club scene. I pretty much picture myself as a goofball hero that is out to save the world. The biggest similarity is our ability to state the obvious with obnoxious phrases. We both like to use sunglasses for dramatic effect when talking to someone. We use phrases like, "every dog has it's day", "you get what you put in", "the verdict is in, but the

jury is out", "the guilty will pay", or anything else that makes you want to swallow your tongue. Bottom line is, I had to pick someone and I just knew Joy Behar would be taken.

WHAT OTHERS THINK

Dauber from *Coach*

Phil's TV Character is Dauber from the show *Coach*. While he is athletic and fully in tune with sports, you're never quite sure what is actually going through his mind. It's as if there is a movie playing in his head some-times, and he's the only one that can see it.



Dopey 2

Dopey is the only dwarf to have no beard at all; he is presumably the youngest of the seven. As his name suggests, Dopey is clumsy. His clumsiness provides comic relief to some of the plot. He is a mute, or at any rate never speaks and does not know whether he can. His job at the mine is to clean up all the unusable jewels and lock up the vault. He is always seen last in line whenever the dwarfs walk to and from work.

Phil McQuain

Rookie

Handicap: 9

Day 1 Matchup:

Chris Colton (22)

Assignment:

Bart's replacement in
Steve's Bed; Drinks;
Gift Swap Asst.

Roommate: Steve Hale

Projected Odds: 20:1



Born: 1/10/71; Charleston, WV

“Educated”: Woodrow Wilson HS/VPI

Nicknames: Philbilly, Philly, Freight Train McQuain, Benjamin Button

Hobbies/Interests: World traveler: Some have called me an international man of mystery (by ‘some’, we can assume he means his mom); playing guitar; attending music festivals; hiking; golf; Hokie football.

Favorite beverage: Diet Coke, and Corona

Favorite snack: Better Chedders

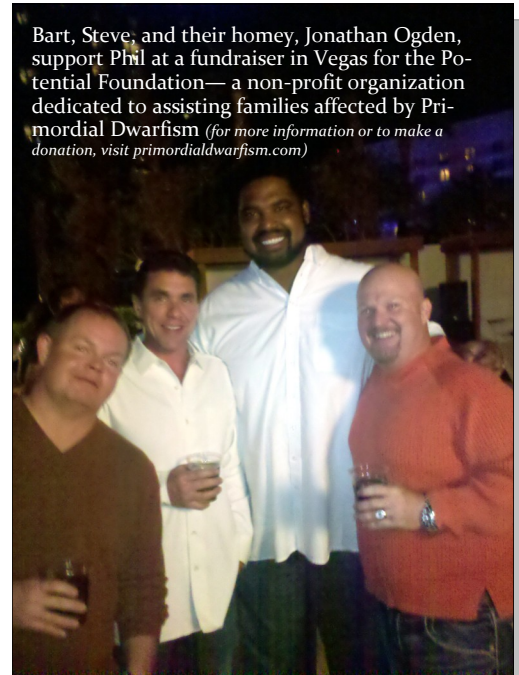
Superstitions: If I am watching the Hokies on TV (only on TV), and they start to lose, I will change the Hokie gear I am wearing to something else to change their fortunes.....I do this quite regularly

Greatest strength: Greatest strength would be my very high level of intelligence. On the golf course, it would have to be my freakishly long driver, If I had a dollar for every time little Hale said that was the farthest ball he has ever seen, after I hit, I would be an even richer man!

Greatest weakness: My greatest weakness would be that I am constantly a nice guy. I am always trying to project this "great guy" aura around everyone, which sometimes causes problems. On the golf course, it would have to be my iron play, over the years, I have gradually lost the pinpoint accuracy that I was always known for.



Phil and Ben 'chill' outside NBC studios in NYC after a full day of shopping and spa treatments. According to Ben, "He's adorable— like a best friend and a mascot all in one little package!"



Bart, Steve, and their homey, Jonathan Ogden, support Phil at a fundraiser in Vegas for the Potential Foundation— a non-profit organization dedicated to assisting families affected by Primiordial Dwarfism (for more information or to make a donation, visit primordialdwarfism.com)

MOST SIMILAR TV CHARACTER

WHAT I THINK

Jack Bauer from *24*

The TV character that I feel that I most resemble is Jack Bauer from the *24* franchise. As many of you know, I possess many of the same personality



traits and physical attributes of this amazing TV character.

Both of us are considered brave, heroic, devilishly handsome, strong, loyal, ballsy, and even a tad reckless. We both put our friends and country, ahead of our own safety, and both excel in the toughest situations. We can always be counted on to make the tough decisions, and always complete our mission. I sometimes wake up in the morning, and

realize how lucky the world is to have such a great person looking out for them, even if they do not know it! As Bart Edmunds once remarked... "The world needs more heroes like you Phil", and I humbly agreed [*Editor's Note: According to Walter Middy, Bart said the same thing to him when they met in Neverland.*]

WHAT OTHERS THINK

Ernest T. Bass from *The Andy Griffith Show*

This was the easiest assignment I've had in recent years because, right off the bat, there is an obvious choice of TV character that resembles Phil both in appearance and demeanor. Upon meeting Phil, you may get the feeling that you know him from somewhere, and its because you do!.....you

grew up watching him as Ernest T. Bass on *The Andy Griffith Show*. They are cut from the same cloth when it comes to their fashion sense, hairstyles and hygiene, but those are superficial similarities that everyone notices at first glance. To understand the depth of their likeness you had to see Phil the first time he left the hills of West Va. to begin his Freshman year at Va. Tech. That first day he walked into his dorm room and flushed a toilet for the first time was priceless and reminiscent of the episode where Ernest T. went into Mayberry and was enrolled in Mrs. Wiley's finishing school. Seeing their simple innocence crushed by the complexities of modern technology was truly heartwarming and because I've been a lifelong fan of *The Andy Griffith Show*, I think it has endeared me to Phil forever. That being said, once you get past the Philbilly exterior, there is much more to Phil than meets the eye. He has adapted to civilization better than most and has become somewhat of a "Jack of all Trades"—you name it and he can talk about it. His two favorite hobbies are music and technology, but whatever you do, don't say anything negative about his iPhone. He is passionate with his iPhone, and if you criticize anything about it, he will throw a rock through your window and run off screaming, "It's me...It's me...It's Ernest T!!!!"



The Courses



MOORLAND

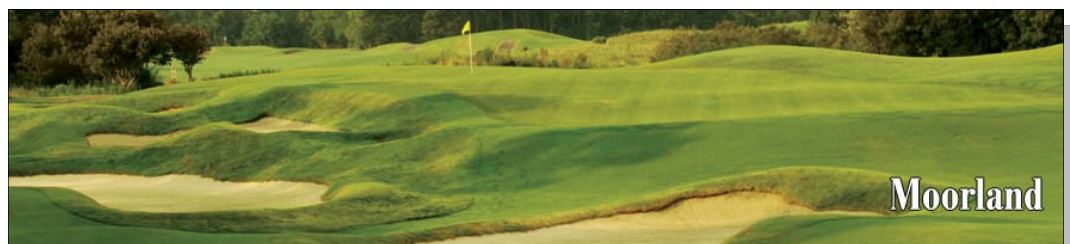
Par 72

6,755 Yards

74.0/140

Considered one of the greatest challenges on the East Coast - a par 72 triumph - Moorland was designed by noted golf architect P. B. Dye and opened for play in 1990. Large expanses of natural growth, sand, water and waste areas combine with extraordinary undulations and bulkheads to present a course reminiscent of the PGA West Stadium Course.

This controversial course is definitely a "target" golf course. Created in the Dye tradition, Moorland will cause golfers to rise to incredible heights on the sculpted terrain, sink to considerable depths in the bunkers, and constantly use every ounce of skill and luck in their possession. Moorland indeed earned its designation as one of the "Top 10 New Courses of 1990," by *Golf Digest*. Play the 245 yard par-4 16th and see for yourself why the large bunker guarding the green is so appropriately named "Hell's Half Acre."



The Courses



HEATHLAND

Par 71

6,800 Yards

72.8/131

The par 71 Heathland Course, designed by Tom Doak, is a return to the grand "Old Country" traditions of the game. It has been distinctly molded in the image of the British Isles links courses, with holes reminiscent of familiar links like St. Andrews, and lesser known gems like Lahinch and Cruden Bay. Most of the holes are without high vegetation, providing a visual presentation like no other course in the area. The challenge and difficulty of this course comes primarily from the unobstructed breeze that wafts constantly over the course, and the strategically placed bunkers and lush, deep rough that closely border all fairways. Many of the greenside bunkers are deep and require creative shots to make an escape. Rated one of the "Top 10 New Resort Courses in the World" by *GOLF Magazine* in 1990, Heathland's design allows players of all ability levels to "step back in time."

The Courses



HERITAGE

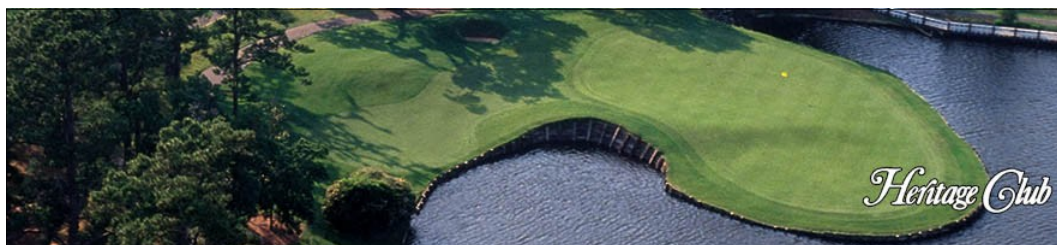
Par 71

6,656 Yards

73.3/136

Heritage Plantation is a tribute to the rice culture that revered the land centuries ago. Over 600 acres of giant magnolias, 300-year-old oaks, fresh water lakes and marshes have been transformed into a golfing community to rival the finest in the world. Built on the site of the True Blue and Midway Plantations, Heritage reflects a history of gracious, tasteful living. A magnificent avenue of oaks leads to the Southern Colonial clubhouse overlooking the Waccamaw River.

Ranked among the "50 Best Public Courses in America" by Golf Digest, the Par 71 Heritage Club, a Dan Maples design, follows the natural contours of the land, stretching out beside long abandoned and historic rice fields. Heritage features spacious, rolling fairways and large, undulating greens, surrounded by lush stands of crepe myrtle, camellias and azaleas. Heavily landscaped areas of wildflowers and flowering shrubs will maintain the beauty of this historical setting for generations to come.



Practice Round

Taking its place alongside the award-winning Heathland and Moorland courses, Parkland is quickly establishing itself as the most exciting new course in Myrtle Beach. Offering distinct contrasts to the first two Legends courses, Parkland demonstrates the diversity and beauty of the natural terrain with contoured, tree-lined fairways, vast natural areas, deep-faced bunkers and massive, multi-level greens.

Opened for play in October 1992, Parkland is modeled after the style of architects Alister MacKenzie, (Augusta National) and George Thomas (Riviera Country Club). Playing the unforgettably challenging fairway and green-side bunkering requires a deft touch off the tee and on the approach. From tee to green, strategy will be the order of the day on this stunning, par-72 playing field.



Friday, March 16, 2012

PARKLAND
Legends Golf & Resort
Myrtle Beach, SC

Cart & Green Fees Included!!

Tee times are 1:00 pm, 1:08 pm, and 1:16 pm

Confirm your spot with Ben Fry by Thursday, March 8, 2012

bfry@metlife.com
(540) 525-0314

The Event

Day 1

Moorland: Blue Tees

SMC Play-in Matches/Qualifying

Stableford Teams and Round 1 Matchplay Pairings (Blind Draw)

(Play-in matches in boxes)

9:24

Ryan (0)
Ben (4)

Phil D. (10)
Bo (7)

9:32

Steve (2)
Ken (23)

Joe (13)
John (4)

9:40

Phil M. (9)
Chris (22)

Bart (5)
Woody (8)

Four-man Stableford

\$40.00/Team

Team Points: 2/1

Skins

Daily Purse: \$36.00

The Event

Day 2

Heathland: Blue Tees

Round 2 of SMC

	<u>12:20</u>	<u>12:28</u>	<u>12:36</u>	
<u>A</u>	1 Crush (0) 8 _____	<u>B</u>	2 Hale (2) 7 _____	
	9 _____		<u>C</u>	3 Rogich (23) 6 _____
	11 _____		<u>D</u>	4 Fry (4) 5 _____

Skins

Daily Purse: \$36.00

2 Best Balls (Four-man Teams)

\$60.00/Team

Team Points: 4/2

Calcutta

Day One

The Event

Calcutta

<u>PLAYER</u>	<u>HCP</u>	<u>OWNER</u>	<u>BID</u>	<u>POT</u>	<u>DAY 1</u>	<u>DAY 2</u>	<u>TOT</u>
ROGICH							
COLTON							
ASSAID							
DICK							
McQUAIN							
DEANS							
BLANKENSHIP							
EDMUNDS							
FRY							
BRADBERRY							
HALE							
CRUSH							
		ENTRY FEES					
			TOTAL				

The Event

Day 3

Heritage Club: Blue Tees

Round 3 of SMC

9:24

L(A) _____

L(D) _____

(10) _____

(11) _____

a

W(A) _____

W(D) _____

L(B) _____

L(C) _____

b

W(B) _____

W(C) _____

(9) _____

(12) _____

Skins

Daily Purse: \$36.00

Two-Man Stableford

\$60.00 (Pays 1st & 2nd)

Team Points: 6/3/1

Dual-Day Double-Dude Duel

Day One

Calcutta

Day Two

Summit Dinner

Liberty Steakhouse & Brewery

Broadway at the Beach

Immediately Following Round

The Event

Dual-Dude Double-Day Duel

Teams:

I
L (A)/L (B)

III
W(C)/(10)

V
W (A)/(12)

II
L (C)/L (D)

IV
W (D)/(9)

VI
W (B)/(11)

Leaderboard

<u>TEAM</u>	<u>DAY 1</u>	<u>DAY 2</u>	<u>TOTAL</u>
<u>I</u>			
<u>II</u>			
<u>III</u>			
<u>IV</u>			
<u>V</u>			
<u>VI</u>			

The Event

Day 4

Moorland: Blue Tees

Final Round of SMC

Payout to Winner of Championship Match: \$100.00

8:28

I

L(A) _____

L(B) _____

IV or V

L(a) _____

9 or 12 _____

8:36

II

L(C) _____

L(D) _____

III or VI

L(b) _____

10 or 11 _____

8:44

V or IV

9 or 12 _____

W(a) _____

III or VI

W(b) _____

10 or 11 _____

Skins

Daily Purse: \$36.00

Dual-Day Double-Dude Duel: Day Two

\$90.00 (Pays 1st & 2nd)

Team Points: 8/4/2

The Melee

Total Purse: \$45.00 (Pays 1st & 2nd)

Face-Off & The Draft

Pro-V's

The Event

Day 4

Face-Off

<u>Black</u>	<u>White</u>
L(a)_____	L(B)_____
9/12_____	L(A)_____
L(C)_____	10/11_____
L(D)_____	L(b)_____
9/12_____	10/11_____
W(a)_____	W(b)_____

The Draft

W(a)_____	W(b)_____
_____	_____
_____	_____
_____	_____
_____	_____
_____	_____

Awards Presentation

SMC Champion (\$100): _____

SMC Runner-up (\$50) _____

Low Net (\$50): _____

Individual Team Champion (\$25): _____

High Net (AKA: Hapless Sap)(\$25) _____

Hall of Fame/Shame

Below is a partial listing of notable accomplishments over the years. So much has happened, that it is difficult to distill it down to the few pages allotted here.

Money and Earnings

These are earnings from Tournament sanctioned and sponsored events only and do not include Calcutta or "side-action".

<u>Most Money Won (Tournament)</u>	Ken Rogich	\$289.00	2006
<u>Least Money Won (Tournament)</u>	Steve Hale	\$0.00	2008
<u>Highest Earnings per Start (min 2 starts)</u>	Kevin Dill	\$90.18	
<u>Lowest Earnings per Start (min 2 starts)</u>	Jeff Parker	\$29.67	

Scoring

<u>Low Gross (Tournament)</u>	Steve Hale	308	2006
<u>High Gross (Tournament)</u>	Joe Assaid	460	2001
<u>Low Gross (Round)</u>	Steve Hale 72	S'bury Glen	2005
<u>High Gross (Round)</u>	Jeff Parker 124	Heather Glen	2010
<u>Low Net (Tournament)</u>	J.Assaid/S.Hale	+18	2006
<u>High Net (Tournament)</u>	Joe Assaid	+80	2001
<u>Low Net (Round)</u>	W. Deans 65	H.Head Natl	2009
<u>High Net (Round)</u>	Jeff Parker 104	Heather Glen	2010

Miscellaneous

<u>Highest MIGS MP Winning %</u>	Kevin Dill	.714
<u>Lowest MIGS MP Winning % (Active/2+ Summits)</u>	Chris Colton	.462
<u>Largest Calcutta Purse</u>	\$2,292	2011
<u>Highest Calcutta Bid</u>	\$370 by B.Edmunds for G.Stephens	2007
<u>Lowest Calcutta Bid</u>	\$20 by B.Edmunds for J.Assaid	2003
<u>Most Majors</u>	Steve Hale	7
<u>Most Majors + SMC Runner-ups</u>	Steve Hale	9

Interview (cont.)

(Continued from page 19)

KD: I feel the tide is beginning to turn in terms of an influx of new Summit talent. I believe that the Summit's best years are in it's future.

Dr: What are your thoughts on being the first Summit Champion unable to defend his Title?

KD: Not Being able to defend is a gut wrenching predicament, but as you are well aware, the SMC is bigger than one man and his physical ailments. Life must move forward and crown a new Champion in 2012.

Dr: Break down your game for us. In what situations do you feel most confident, when do you feel most anxious, and why?

KD: Breaking down my golf game is a rather simple task. I don't do anything particularly well, but I don't do anything particularly terrible either. My game is mediocrity in motion with a few lucky putts and a couple of up and downs. I would easily say that I have the most boring game of the Summit participants. I have yet to play a Summit match where I did not feel anxious. It just comes with the territory.

Dr: Does hurt your feelings when people make fun of your swing, lack of distance off the tee, outfits, etc?

KD: The short answer is yes, my feelings get hurt every Summit. For example: When I "Nut" a drive and John Bradberry says, "Wow! What was that; 185 maybe 192?" Or, when I put a lot of effort into one of my outfits and Bart asks me if his wife



The "Klan" in happier times.

could borrow my pants. Words are like daggers and they can be very painful.

Dr: Is the Van-Klan dead?

KD: I am offended by this question. By my account, the Van Klan has won 5 out of the last 6 SMC Titles. Is there another organization in the Western Hemisphere that could make that claim? The Van Klan is more relevant than ever. *[Editor's Note: Rumor has it that Woody has been on a recruiting rampage in an effort to secure a replacement to join the Van's skeleton crew of Joe and him.]*

Dr: Tell us something about you that you feel is different from all your Summit competitors.

KD: Hmmmmmmmm...I was a decorated Alter Boy at Roanoke Catholic High School, I attended Jerry Sandusky's football camp, I look stunning in pastels, and I'm the only Summiteer to own a pair of pink and fuchsia golf shoes. *[Editor's Note: Nuff said.]*

Dr: Tell us about your path to the Championship. Start with your Play-in Match against fellow Van-Klanner, Joe Assaid. Was there some anger or animosity that con-

(Continued on page 67)

Interview (cont.)

(Continued from page 66)

tributed to the 6/4 beating you administered?

KD: My Championship journey began when I was pitted against my dear friend and fiery competitor, Joe As-said. It is no secret that Joe is a former SMC Champion and, in terms of pure ball striking, Joe may be the best in the business. Lucky for me, Joe did not have his "A" game, or my Summit quest could have ended much earlier.

Dr: Your Second Round Match pitted you against another patsy, Dave

possibly a four-man event between Dave, Jeff, Chris, and Ben. P.S.: Did he call Dave a short genius?] I was very fortunate to escape with a victory.

Dr: Round Three found you facing a real competitor, Ryan. This was an unusual occasion for you in that you were receiving 4 shots. Tell us about that Match, the hype, and what you say to those that think Ryan is the best golfer at the Summit.

KD: Stepping onto the tee box against my Third Round opponent, Ryan Crush, is the equivalent of stepping



Pictured here with a slimmed-down Ryan, few would deny that Kevin has held up well for his age. He gives himself away, however, by forgetting that no one under 50 would clip a pen to their golf shirt while playing.

into the ring with Mike Tyson. Had it not been for my generous allotment of four strokes, I suspect that Ryan may have made quick work of me. Is Ryan the best golfer at the Summit? It would be unfair of me to place that mantra on Ryan's mantle having never brought home the SMC Trophy. [Editor's Note: Per The Merriam-Webster Dictionary, 'Mantra' is defined as: 'Hindu or Buddhist mystical formula or incantation.'

Linden. Tell us about that and how it played out. Did you feel sorry for him, at any point?

One can only speculate as to the nature of insult he is perpetrating on Ryan, here.] Having said that, Ryan would have to be hands down pick to win it in 2012. Either Ryan or that beast of a man, Ken Rogich.

KD: I would hardly categorize my Second Round opponent, Dave Linden, as a patsy? Dave is a short game genius who, under the right set of circumstances, he could be hoisting the SMC Trophy one day. [Editor's Note: An informal straw-poll could produce no set of circumstances in which Dave wins the SMC other than

Dr: And finally, your Finals Match against the outspoken, Steve Hale. What happened there? Was there any lingering ill-will over 'The Video', and, if you were to play him

(Continued on page 68)

Interview (cont.)

(Continued from page 67)

10 times, how many would he win?

KD: My Championship Match against Steve Hale would be categorized as classy and professional. Steve conducted himself as a perfect gentleman throughout our Match and was quick to congratulate me upon my victory. It was my first SMC victory over this icon amidst many losses. Had it not been for some superb putt reading by my partner, Bo Blankenship, the Match may have turned out differently. *[Editor's Note: Tip-toeing is the most effective way to avoid waking a sleeping dog . . . assuming that one is afraid of the dog.]*

Dr: Obviously a fierce competitor, in your opinion, what's holding Bo back and what are his chances of winning a SMC Title someday?

KD: I look for Bo's 'dry spell' *[Editor's Note: This would imply that, at some point, there was a 'wet spell']* to end as soon as this year. My Grandmother said that the sun don't shine on the same dog's rectum every day. I look for the sun to shine upon Bo as he makes his run for the title in 2012. *[Editor's Note: No, he did not!! Any similarities between Bo and a dog's rectum, whether implied or blatantly stated by Mr. Dill, are his opinion alone and do not reflect the opinions of **The Summit** and/or its staff.]*

Dr: Why do people have such a hard time viewing you as an athlete, and is there anyone on The Summit that can beat you at free-throw shooting?

KD: I believe this is an area which has plagued me my entire life and will most likely continue. Because I am slight of stature, cute, and enjoy a



Steve passes the Title and Trophy to a strangely maniacal Kevin

good Barry Manilow CD, people tend to view me in a different light. As far as having an equal in my free throw shooting ability? . . . only Jeff Parker would have the God given ability to compete with me in this venue. *[Editor's Note: In the immortal words of Tiny Tim, "Tip-toe through the tulips in the morning . . ."]*

Dr: Rumor has it that the Van-Klan spouses have banned *The Summit* magazine. Please set the record straight on this point, and explain how/why Joe ended-up with a cockamamie, counterfeit cover on last year's copy.

KD: First of all, please calm down, [Dr. Wells]! 'Cockamamie' is strong language! Van Klan spouses have not banned *The Summit* magazine! The

(Continued on page 69)

Interview (cont.)

(Continued from page 68)

Van Klan simply condensed the magazine as part of our "Going Green" campaign. I trust this matter is settled. *[Editor's Note: Anybody ever seen the show **Beyond Scared Straight?**]*

Dr: Do you consider yourself a good 'pressure player', and, without naming names, describe someone who is clearly NOT a pressure player.

KD: I have never played a Summit Match where I was not nervous. It is simply a fabric of the SMC, and I would not want it any other way. *[Editor's Note: We will give the benefit of the doubt and assume that Kevin's microphone cut-out on the second part of the question. Other-*



A little P.T. Barnum takeaway with a Johnny Miller finish

wise, a somewhat pitiful theme would seem to be emerging.]

Dr: What long-term impact do you feel your recent surgery will have on your golf game?

KD: It is my desire to come back stronger with an absence of a limp. I also think I will look better in my short pants. A straighter leg will be a sexier leg.

Dr: I'll mention a player, and you give me two adjectives to describe him—one strength and one weakness:

Joe: *BraveHeart*-like focus;
Quick on the trigger ("That's what she said!")

Bo: Shot-making ability;
Sporadic driver

John: Buttery swing plane;
The dreaded 3 ½ footer

Steve: Best putter on earth;
Ego out of control

Bart: Cruelty; Does not play well with others.

Ben: Dustin Johnson length;
Needs compass to find drive

Woody: Matching hat, towel and socks; Bart will practice mind control

Jeff: Devilishly handsome;
Has no flaws in game

Ken: Remarkable lover;
Analytical thinking

Ryan: Lou Ferrigno arms; Beer

(Continued on page 70)

Interview (cont.)

(Continued from page 69)

Dr: What are your own strengths and weaknesses?

KD: Course management; Forced carries

Dr: If you had a magic wand, what one change would you make to your own swing/game?

KD: I would like to be able to work it both ways on command. [Editor's Note: Look for Kevin's DVD set entitled "**Going Both Ways**" due out this fall.]

Dr: If you had a magic wand, what one change would you make to Joe's swing/game?

KD: Joe's swing is textbook. I would not change a thing. As a matter of fact, I would use it as an instructional video for America's youth program [Editor's Note: **The Summit** does not endorse Mr. Dill's obvious racial slur implied by his clumsy attempt to subtly insert the word 'America's' where no descriptor was needed, so as to avoid confusion as to with which country Joe's loyalties lie. Joe, we at **The Summit** apologize for Mr. Dill on behalf of your fellow Summiters and are, frankly, glad you are in our country.]

Dr: Why does Woody wear two gloves?

KD: Why does a hobby horse have a hickory penis? [Editor's Note: ?]

Dr: Based on what you've seen/heard, describe Jeff's political views.



Never ashamed to go his own way, Kevin doggedly plows through his grandfather's stockpile of Vitalis— 37 years after OPEC forced the shutdown its production.

KD: Jeff is an individual who's political views are tied deeply to principle. He is a deep thinker who puts country before party. That is why Jeff calls himself a Democrat.

Dr: Without you to defend, who are your top two picks to win the '12 Summit and why?

KD: I don't like to paint myself into a corner, but I will tell you this— one of the following four individuals named will win this year: Bo- The timing is right; Ryan- Too much talent; Ken- This red-headed phenon

(Continued on page 71)

Interview (cont.)

(Continued from page 70)

is due. Bart- Has something underhanded and dastardly up his sleeve.

Dr: What 'recipe for success' would you offer some of the younger participants trying to break into the winner's circle?

KD: Great question. I would love to give John and Ben a great big hug and just let them know that even though they are probably not going to win, that I love them just the same. There are other things that I bet they are good at. Ben is a great Sudoku player and John is really good with animals.



To their credit, the Van Klan has captured 6 of 12 Summit Titles and 5 of the last 6.

In a post-interview press conference, Dr. Wells indicated that extreme timidity is common in the wake of marriage and surgeries such as Kevin's. Most recover eventually, but, in rare cases, some patients never fully regain their masculinity. Dr. Wells went on to say that the likelihood of a full recovery is greatest in situations where the patient has not been previously pecked by hens or other such birds. His prognosis for Kevin in this regard was not good.

While *The Summit* sincerely hopes that Kevin someday returns to his former self and finds his way back to the glory of the Winners' Circle, the general consensus is that his days of competitive golf or 'guys golf weekends' are, unfortunately, behind him. In that regard, Kevin, we bid you adieu and wish you the best of luck on the journey ahead.

Summit Scorecard

PLAYER	ROUND 1			points	ROUND 2			points	ROUND 3			points	ROUND 4			points	
	HCP	GROSS	NET		HCP	GROSS	NET		HCP	GROSS	NET		HCP	GROSS	NET		HCP
ASSAID	13																
BLANKENSHIP	7																
BRADBERRY	4																
COLTON	22																
CRUSH	0																
DEANS	8																
DICK	10																
EDMUNDS	5																
FRY	4																
HALE	2																
McQUAIN	9																
ROGICH	23																

Seedings

1. Crush
2. Hale
3. Rogich
4. Fry
5. _____
6. _____
7. _____
8. _____
9. _____
10. _____
11. _____
12. _____

DDDDD Teams are in Red.

Summit Matchplay Championship

	<u>ROUND 2</u>	<u>ROUND 3</u>	<u>ROUND 4</u>	<u>ROUND 3</u>	<u>ROUND 2</u>
1	Crush	L(C) II		9 IV	Hale
2		W(A) V		W(B) VI	
3	A	(DDDDD: 12)	(9 or 12)	(DDDDD: 11)	B
4	Fry		W(a)		
5	D		a	b	
6		(DDDDD: 9)	W(b)	(10 or 11)	Rogich
7		W(D) IV		(DDDDD: 10)	
8		L(B) I	L(b)	W(C) III	C
9			(10 or 11)	12 V	
10		10 III	L(C)		
11		L(A) I	L(D)	11 VI	10
12			L(a)	L(D) II	12
			(9 or 12)		
			L(A)		
			L(B)		

NOTE: Green tees-off first; Yellow second; Blue last
Two-man teams in rounds 3&4 grouped by shading